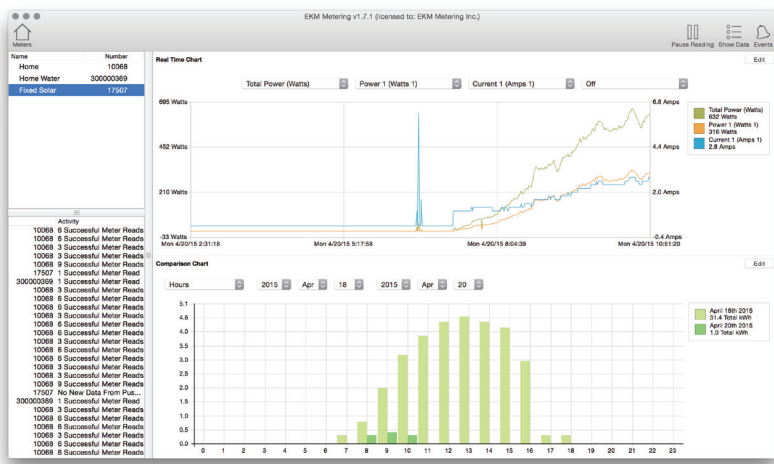
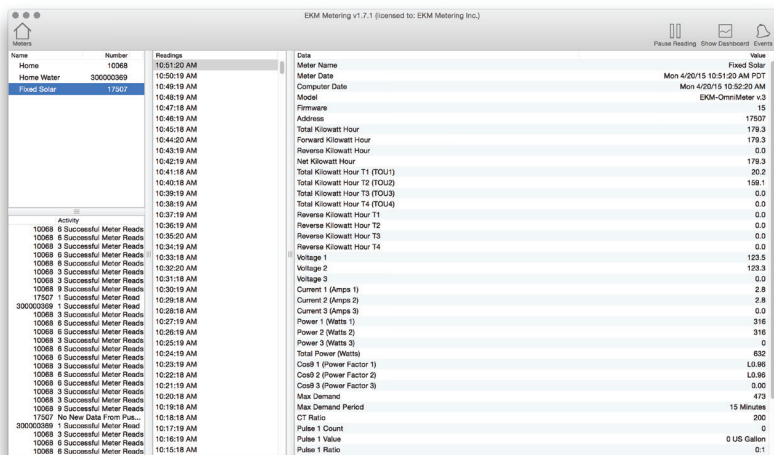


EKM METERING INC.

EKM Dash 1.8.3.0 User Manual



(Fig. 1)



(Fig. 2)

The EKM Dash is our desktop software solution for your meter data management. It is intended to give you the tools to easily visualize, log, email, and export your data in a number of different ways. You can use it to read your meters directly with your own computer or link it to your EKM Push account to seamlessly retrieve your data from the cloud.

Download the software at one of these web links:

Windows: <http://dash.ekmmetering.com/EKMDash/win.zip>

Mac OSX: <http://dash.ekmmetering.com/EKMDash/mac.zip>

Linux: <http://dash.ekmmetering.com/EKMDash/lin.zip>

For EKM Dash setup tutorials, and lots of other helpful information, please visit our online Knowledge Base at:

<https://help.ekmmetering.com/support/home>

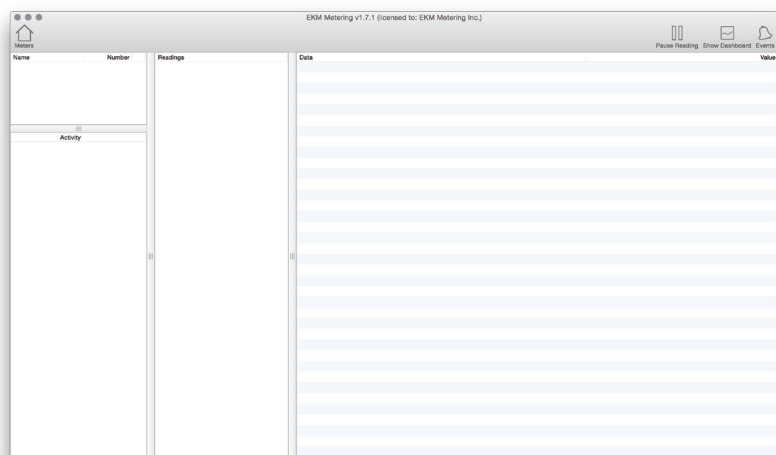
If you have any questions, email them to info@ekmmetering.com. Please include screenshots of your main Dash window and settings window. You can also send us more information using the “Send Diagnostic Information” under the Help menu.

Index

Page Topic

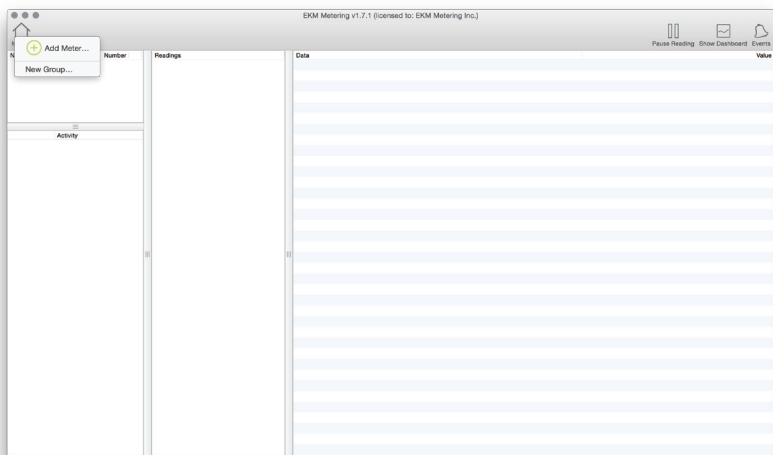
3	Adding a Meter
4	Setting communication method
4	USB Converter (<i>Fig. 5</i>)
4	iSerial (<i>Fig. 6</i>)
4	EKM Push (<i>Fig. 7</i>)
5	Setting Read Interval (<i>Fig. 8</i>)
5	Setting Country & Time Zone
5	Editing a Meter (<i>Fig. 9</i>)
5	Setup (<i>Fig. 10</i>)
6	General Settings (<i>Fig. 11</i>)
6	Advanced Settings
6	General (<i>Fig. 12</i>)
6	LCD Display (v.4 meters only) (<i>Fig. 13</i>)
7	Pulse (v.4 meters only) (<i>Fig. 14</i>)
7	Control (v.4 meters only) (<i>Fig. 15</i>)
7	Rates
7	Time Of Use (<i>Fig. 16</i>)
8	Seasons (<i>Fig. 17</i>)
8	Holidays (<i>Fig. 18</i>)
8	Schedules (<i>Fig. 19</i>)
9	Data (<i>Fig. 20</i>)
9	wattvision (<i>Fig. 21</i>)
10	Events (<i>Fig. 22</i>)
10	Email settings (<i>Fig. 23</i>)
10	Creating a Report (<i>Fig. 24</i>)
11	Email Options (<i>Fig. 25</i>)
11	Setting a Schedule (<i>Fig. 26</i>)
11	Creating a Trigger (<i>Fig. 27</i>)
12	Dashboard (<i>Fig. 28</i>)

If you have any questions, email them to info@ekmmetering.com. Please include screenshots of your main Dash window and settings window. You can also send us more information using the "Send Diagnostic Information" under the Help menu.



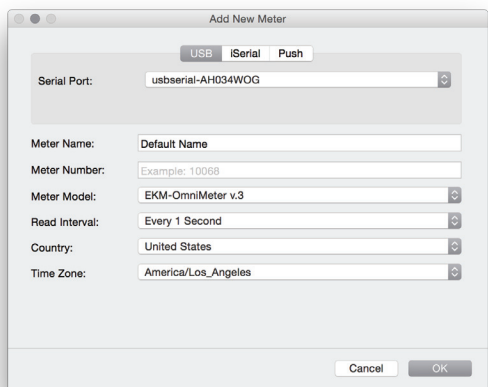
(Fig. 3)

Upon first opening the EKM Dash you will see a blank window. In order to see your meter data you will first need to add you meter and communication setting.

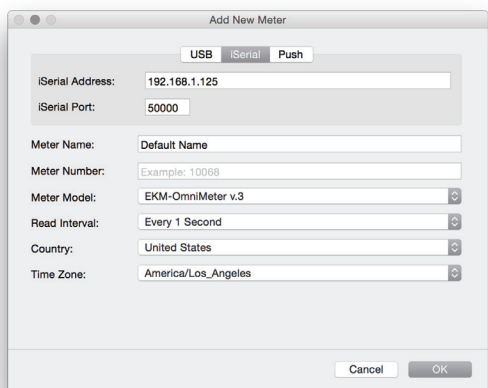


(Fig. 4)

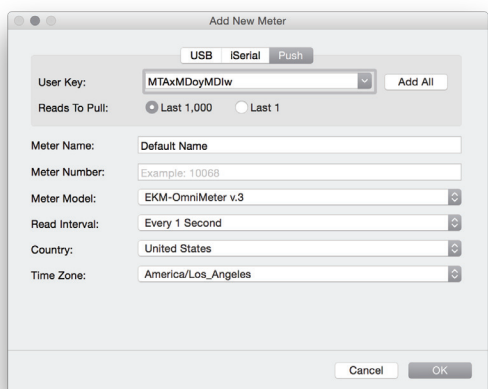
To begin, click on the "Meters" button in the top left of the window and then click "Add Meter."



(Fig. 5)



(Fig. 6)



(Fig. 7)

A new smaller window will appear with a few text boxes for you to fill in:

1. Click the button for your method of meter communications. To read your meter locally with a USB adapter, click "USB." To read your meter over the internet with an iSerial device, click "iSerial." If you have an Omnimeter and an EKM Push gateway, select "Push."

2. Name your meter

3. Enter your meter number. This is the S/N number on the face of your meter. You only enter the integers that follow the leading zeros. For example, meter S/N 00000010068 could be entered as 10068, meter 000300000694 could be entered as 300000694.

4. Choose your meter model from the drop-down list.

5. Communications setup:

EKM Push: Enter your User Key for the Push Device associated with the meter you want to read. For example: MTAxMDoyMDIw. Your User Key was sent to you via email when you purchased your Omnimeter and EKM Push system.

Clicking "Add All" (which will appear to the right of input key window, once your user's key is inserted) will allow you to add all of the meters associated with your Push User Key at once. If you choose this method you will need to individually edit the meters in order to give them custom names or settings.

USB: If you have a computer with USB ports and also have one of our USB converters (do not use other USB converters as they are often problematic):

◦ Connect your meters to your USB to RS-485 Converter and plug the USB converter into the USB port of your computer.

*If your computer does not automatically download the USB drivers, download the USB drivers from FTDI found here:
<http://www.ftdichip.com/Drivers/VCP.htm>

◦ In the Serial Port drop-down list select your USB Com Port. This can be any number from COM 2 to COM 24 or some reference to USB.

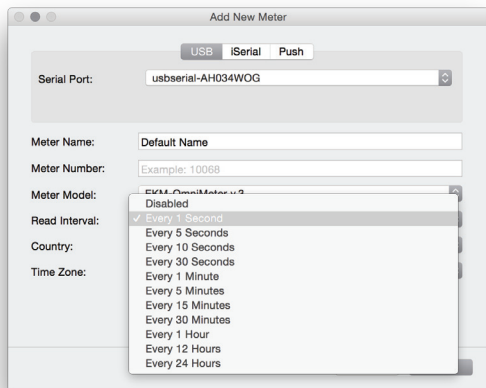
iSerial: In the iSerial Address text box enter the IP address of your iSerial. This can either be the IP address on the LAN network (if you are reading it locally, for example 192.168.1.123), the remote internet public static IP address (for example 144.145.187.30), or your internet name (for example meters.ekmmetering.com).

The default IP address is 192.168.1.125

Enter the iSerial Port (Default is 50000).

For more information on setting up you iSerial device check out these PDFs:

<http://documents.ekmmetering.com/EKM-iSerial-TCP-IP-to-Serial-Converter-Spec-Sheet.pdf>
http://documents.ekmmetering.com/EKM-Dash_Setup_Instructions.pdf



(Fig. 8)

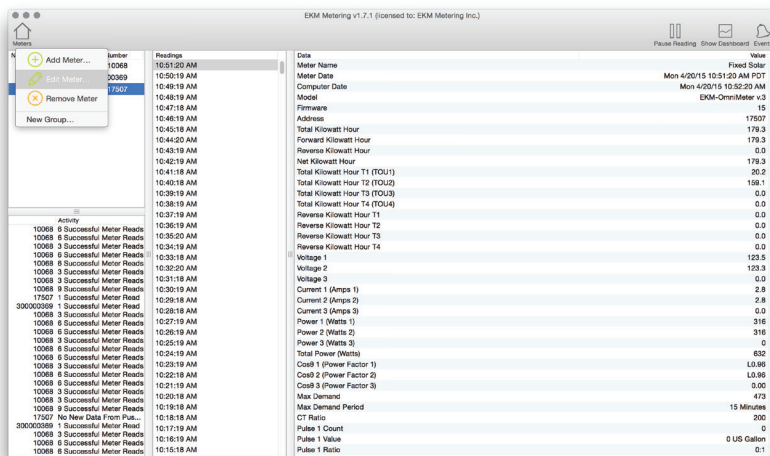
7. Select your Read Interval. If you would like to store less data on your computer you can select a slower read rate according to your needs.

Note: Push meters are set to the fastest read interval by default, typically every 1 minute.

8. Similarly, select your Country and Time Zone from the appropriate drop-down lists.

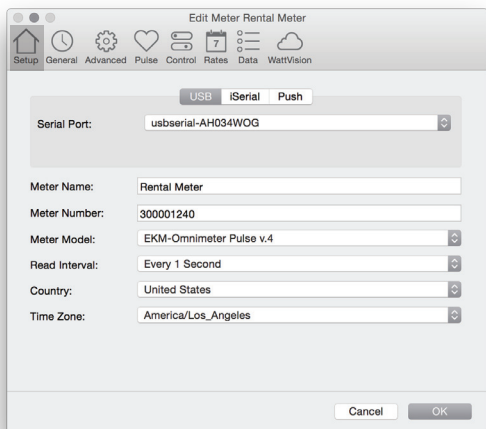
9. Click “OK” to begin to read your meter. You should begin to see reads come in to the Dash within a few seconds.

Note: If you have a Push meter reading on the fastest read interval this can sometimes take a bit longer because it is pulling the latest 1000 reads into the Dash. Alternatively, you can opt to check the box to only pull the latest 1 read.



(Fig. 9)

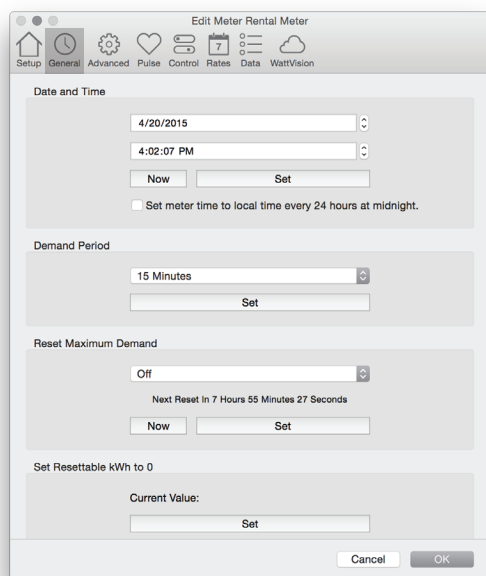
To edit your meter or make additional settings, click the “Meters” button in the upper left corner of the main window. Then click on “Edit Meter.”



(Fig. 10)

A new window will come up with a number of icons across the top. From here you can navigate through the settings options for your meter.

Note: The available icons will vary depending on your meter model and communications settings. The example shown here is the settings window for an Omnimeter Pulse v.4.



(Fig. 11)

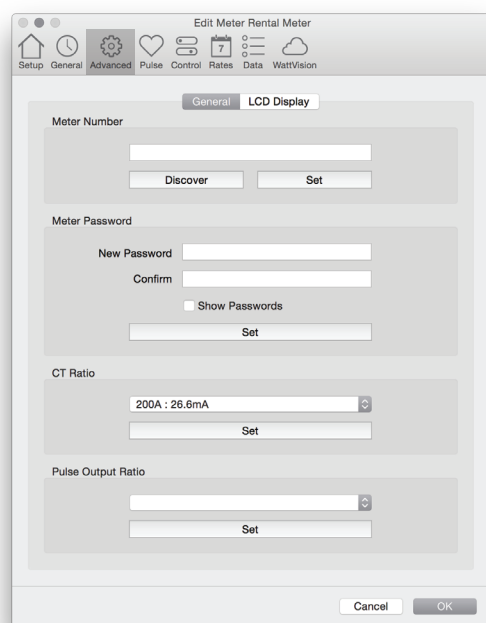
The General Settings are where you can set your meter's date and time, set the demand period, reset max demand, and, on v.4 meters, set the Resettable kWh to 0.

After you enter a change, click "Set" to enter the change in your meter. When prompted for a password, enter the password into the field provided and click "OK."

The default password is "0".

For more information regarding max demand, this link has some helpful information:

https://www.nationalgridus.com/niagaramohawk/non_html/eff_elec-demand.pdf



(Fig. 12)

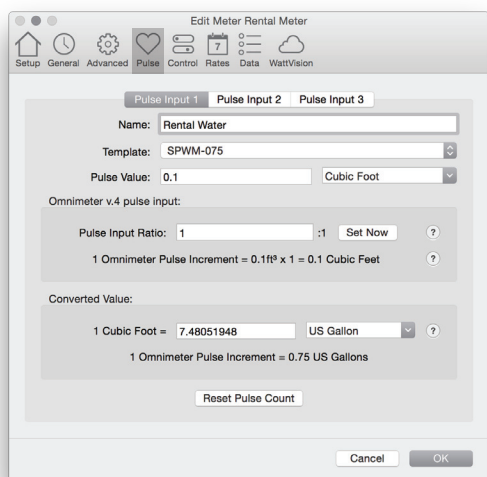
The Advanced Settings are where you can change your meter number (we do not recommend this), change your meter number (we do not recommend this), change CT ratio, and change the pulse output ratio (v.4 meters only).

These changes are instituted in the same way as in the General Settings.



(Fig. 13)

The Omnimeter Pulse v.4 has the ability to change what displays on the meter's LCD screen. To choose what you want to display, click the "LCD Display" tab and check the boxes next to the data values that you want to display on you meter's screen. When you are ready, click "Set" to enter these settings in your meter.



(Fig. 14)

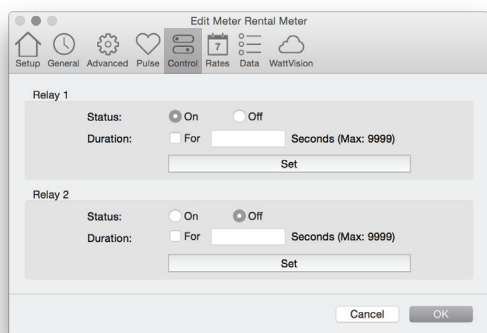
The Omnimeter Pulse v.4 has the ability to count pulses from up to 3 pulse output devices. From the Pulse Settings you can select your pulse output meter model (Template), Which will automatically enter your pulse output meter's Pulse Value.

You can also change the Omnimeter Pulse's Pulse Input Ratio. billing units, and the pulse ratio. The default ratio is 1:1000(for every 1000 pulses input, the pulse register will increment by 1 on the meter). If you chake a change to the ratio, click "Set Now."

The default password is "0".

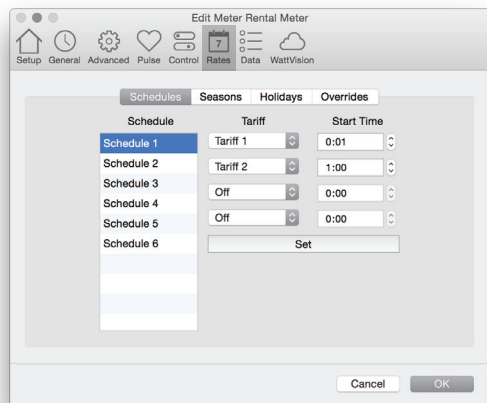
If you would like to convert your pulse output meter's units you can use the Converted Value portion of this window. This will allow you to convert from cubic meters to cubic feet, for example.

In addition to the main Pulse Count, the Dash now has an additional resettable Pulse Count for each pulse input. You can reset this pulse count using the button at the bottom of this window.



(Fig. 15)

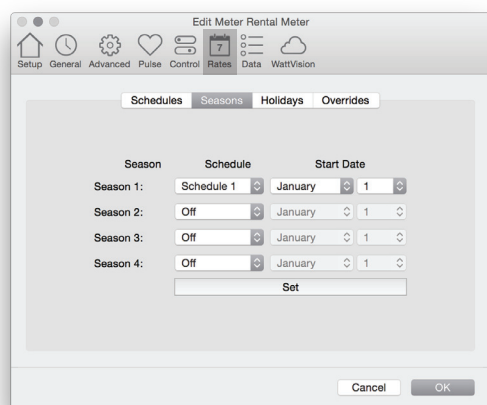
The v.4 meters also have the ability to control up to 2 external relay switches. From the Control Settings you can flip the switch on/off(open/closed) and set the duration.



(Fig. 16)

From the Rates Settings you can set your TOU tariff under the Schedules tab. Click "Set" to enter the changes when you are ready.

Use this to keep track of how much power you use for different time periods of the day. These settings are stored in the meters.



(Fig. 17)

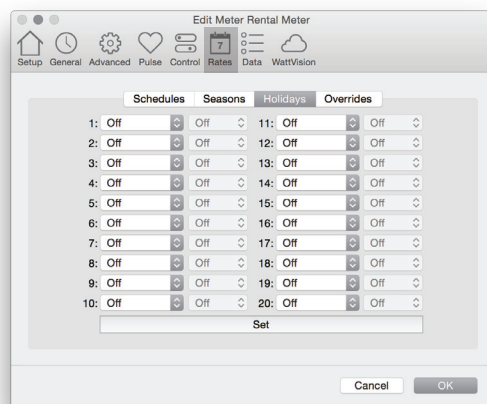
You can set your season under the Seasons tab.

These settings are stored in the meters.

The default password is "0".

For more information regarding season tariffs, this link has some helpful information:

<http://www.pge.com/en/mybusiness/rates/rateinfo/index.page>

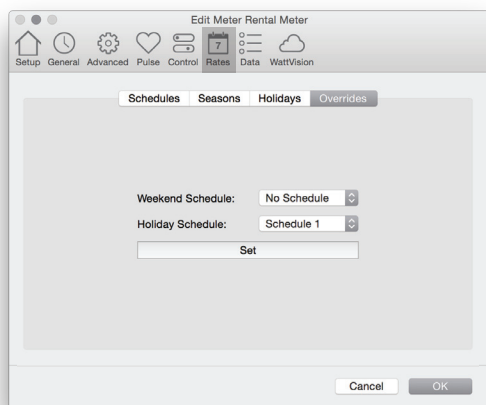


(Fig. 18)

You can also set you holidays under the Holidays tab.

These settings are stored in the meters.

The default password is "0".



(Fig. 19)

Choose your weekend or holiday overrides under the Overrides tab.

These settings are stored in the meters.

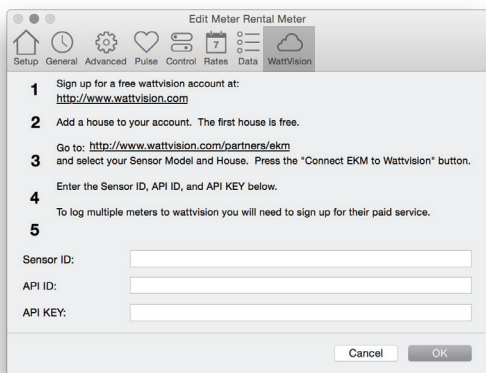
The default password is "0".

	March	February	January	Decem...	Novem...	October
Total kWh	2281.9	2120.8	2120.7	2082.4	1016.2	563.0
TOU 1	1233.2	1139.0	1139.0	1113.2	354.6	182.9
TOU 2	593.2	564.3	564.2	551.7	244.1	121.1
TOU 3	244.1	206.1	206.1	206.1	206.1	119.1
TOU 4	211.4	211.4	211.4	211.4	211.4	139.9
Reverse kWh	395.5	234.3	234.3	196.1	196.1	130.5
Reverse TOU 1	316.1	221.8	221.8	196.1	196.1	130.5
Reverse TOU 2	41.5	12.5	12.5	0.0	0.0	0.0
Reverse TOU 3	37.9	0.0	0.0	0.0	0.0	0.0
Reverse TOU 4	0.0	0.0	0.0	0.0	0.0	0.0

(Fig. 20)

Click the Data icon to view the usage totals for the last six months.

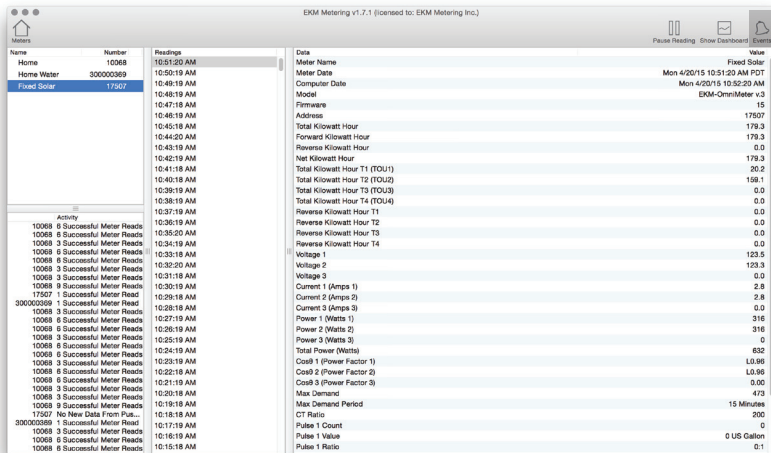
This data is stored in the meters and is recorded on the last day of the month at midnight.



(Fig. 21)

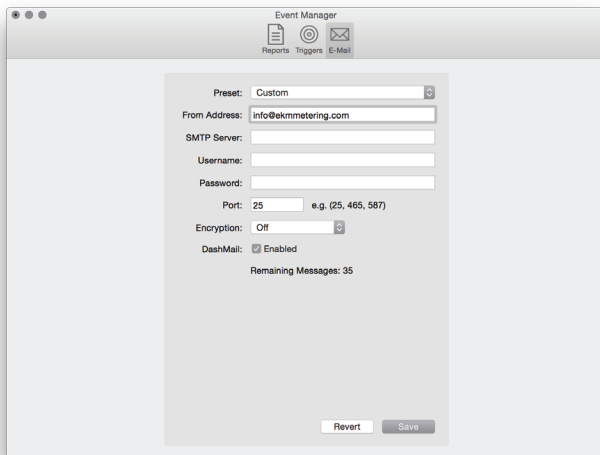
If you are interested in sending your meter data to wattvision.com, click the Wattvision icon and follow the steps provided.

You must first sign up at wattvision.com to get your ID and API key.



(Fig. 22)

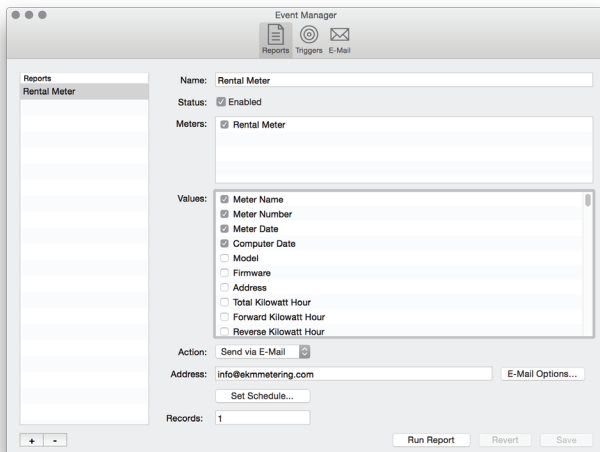
In order to set up reporting and/or triggers, click the Events icon in the upper right hand corner of the main Dash window.



(Fig. 23)

Start by entering your email settings by clicking the Email icon. You can use our Dashmail service to send to 35 emails per month if you have registered your Dash. To use this service, click the check box next to Dashmail and then click save.

If you want to send more than 35 emails per month, or you haven't registered your Dash, enter your personal SMTP settings into the fields provided and then click save.

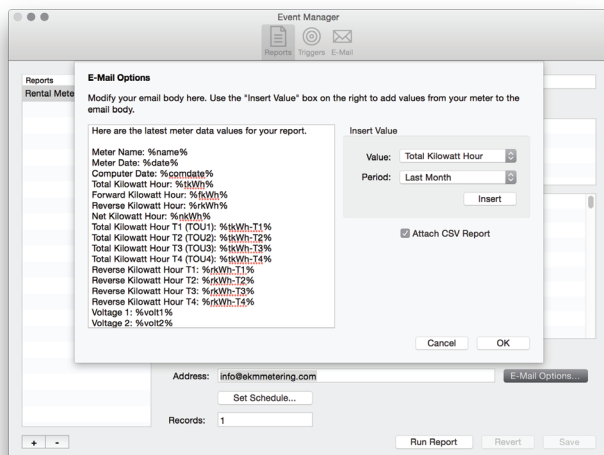


(Fig. 24)

To create and schedule a report, first click on the Reports icon. Next click on the + button in the bottom left hand corner of the window. Now name your report, click the checkbox to enable the report, and indicate which meter(s) you want to include in the report.

The Values checkboxes let you choose which values to include in the .csv file that you can opt to attach to your email report. The Records field at the bottom of the window lets you indicate how many records you want to include in the csv report.

Enter the email address that you want the report sent to.



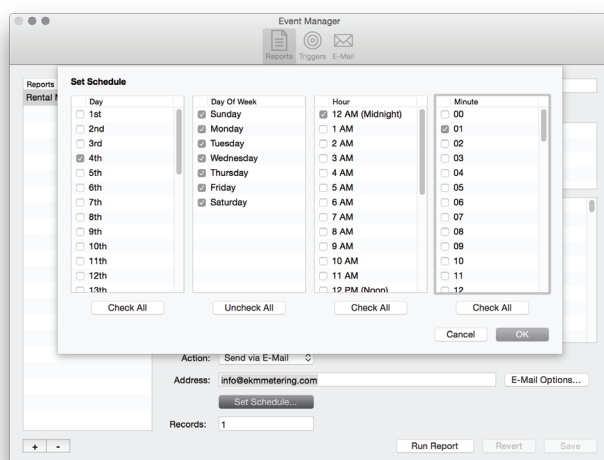
(Fig. 25)

To make changes to the body or your report email, click “E-Mail Options...”

The text box on the left represents what will be included in your email report. The codes that appear like “%...%” will be replaced with the appropriate corresponding values from your meter. You can add, edit, or delete any of the text you wish. You can also insert value codes using the tool on the right of the window.

To attach a .csv spreadsheet to your email report, click the checkbox provided.

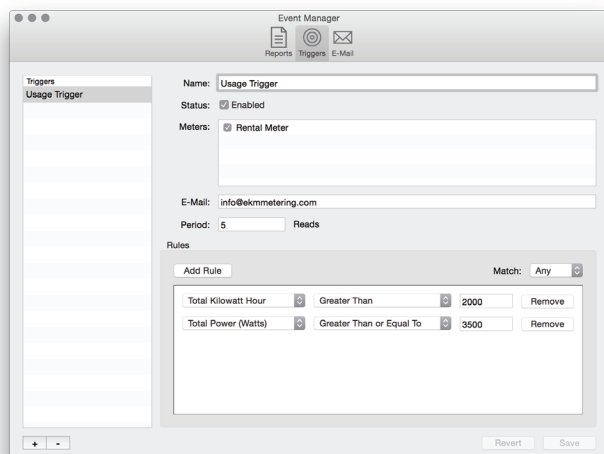
Click “OK” when you are ready to continue.



(Fig. 26)

To schedule your report, click “Set Schedule.” From this window you can schedule your report to be sent by day of the month, day of the week, hour of the day, and minute of the hour. When you are satisfied with you schedule, click “OK.”

You have now setup a report. You can click “Run Report” to verify that you have your email and report settings correct. When you are ready, click “Save” to finish setting up your report. You can always make changes later if you need to.



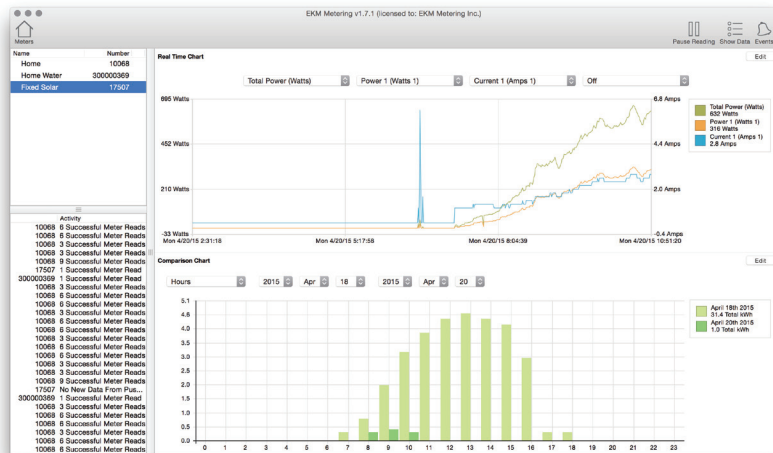
(Fig. 27)

In order to setup triggers, which are simply alerts based on one or more data parameters, click the Triggers icon.

The initial setup is similar to reports: click the + button, name the trigger, click the checkbox to enable the trigger, click the meter(s) that you want to apply the trigger to, and enter an email address that you want the alert sent to.

Enter the period. This is the number of reads, that need to happen in a row, in which the rule(s) of the trigger are satisfied.

Click “Add Rule” to create a trigger parameter. Select the data value, as well as the level that will set of the trigger, from the drop down menus. You can add as many trigger parameters as you wish. If you want the alert triggered for any of the rules you add, select “Any” from the drop-down menu next “Match.”



(Fig. 28)

To view a visual representation of your data, click “Show Dashboard” at the top right of the Dash header.

Real Time Chart:

You can select up to two different data types (Watts, Volts, Amps, etc.) from the four drop-down lists provided.

In order to change the number of reads displayed, click “Edit” at the top right of the widget and enter the number of reads you want displayed.

Comparison Chart:

You can select to display hours, days or months for two different time periods.

In order to change the type of data displayed, click “Edit” at the top right of the widget and select the desired data type from the drop-down menu.

Please note: pulse data, from water or gas meters, will only display for EKM Push users. This data will not display on the Comparison Chart for iSerial or USB Converter users.

Index

Page Topic

3	Adding a Meter
4	Setting communication method
4	USB Converter (<i>Fig. 5</i>)
4	iSerial (<i>Fig. 6</i>)
4	EKM Push (<i>Fig. 7</i>)
5	Setting Read Interval (<i>Fig. 8</i>)
5	Setting Country & Time Zone
5	Editing a Meter (<i>Fig. 9</i>)
5	Setup (<i>Fig. 10</i>)
6	General Settings (<i>Fig. 11</i>)
6	Advanced Settings
6	General (<i>Fig. 12</i>)
6	LCD Display (v.4 meters only) (<i>Fig. 13</i>)
7	Pulse (v.4 meters only) (<i>Fig. 14</i>)
7	Control (v.4 meters only) (<i>Fig. 15</i>)
7	Rates
7	Time Of Use (<i>Fig. 16</i>)
8	Seasons (<i>Fig. 17</i>)
8	Holidays (<i>Fig. 18</i>)
8	Schedules (<i>Fig. 19</i>)
9	Data (<i>Fig. 20</i>)
9	wattvision (<i>Fig. 21</i>)
10	Events (<i>Fig. 22</i>)
10	Email settings (<i>Fig. 23</i>)
10	Creating a Report (<i>Fig. 24</i>)
11	Email Options (<i>Fig. 25</i>)
11	Setting a Schedule (<i>Fig. 26</i>)
11	Creating a Trigger (<i>Fig. 27</i>)
12	Dashboard (<i>Fig. 28</i>)

If you have any questions, email them to info@ekmmetering.com. Please include screenshots of your main Dash window and settings window. You can also send us more information using the "Send Diagnostic Information" under the Help menu.